

# LIFT-ASSIST DAMPER WITH STOPPER



LAD-ST



## ■ Features

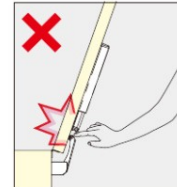
- Lift-assist opening with light opening.
- Smooth and soft close movement at the end, preventing flaps from slamming shut.
- The hook on the flap holds temporarily the door at 95° .
- Ideal for counter flaps at bars, restaurants, and receptions.
- Flap thickness : 15 ~ 40 mm.
- Can be installed without additional processing.
- Template included to ease the installation.

## ■ Remarks

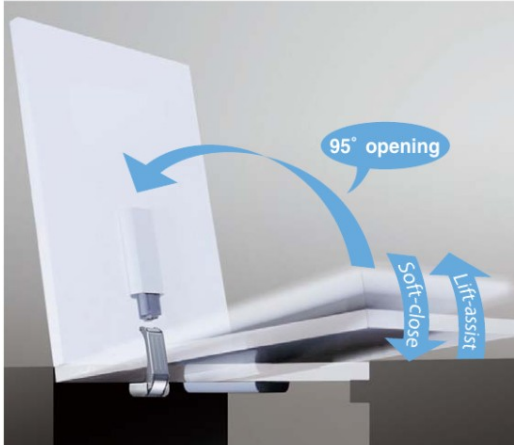
- Please install with hinges strong enough to endure the door pressure.
- Please prepare separate holder to support the flap in closed position. (See below \*)
- Please do not install with concealed hinges.
- LAD-DP, LAD-BKT cannot be installed with LAD-ST.

## ■ Parts Included

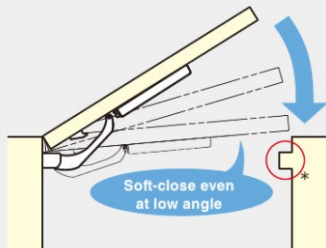
- Binding head tapping screw 4 X 16
- Template



## ■ Application Example



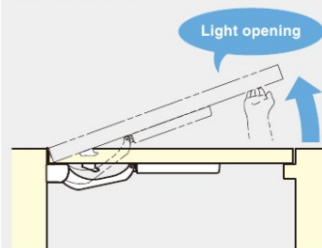
### ● Soft-close



Protects hands and fingers by slowing down the flap.

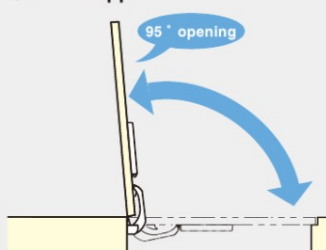
\* Separate holder to support the flap required.

### ● Lift-assist



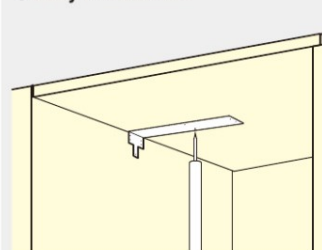
Light opening by Lift-assist function.

### ● With stopper

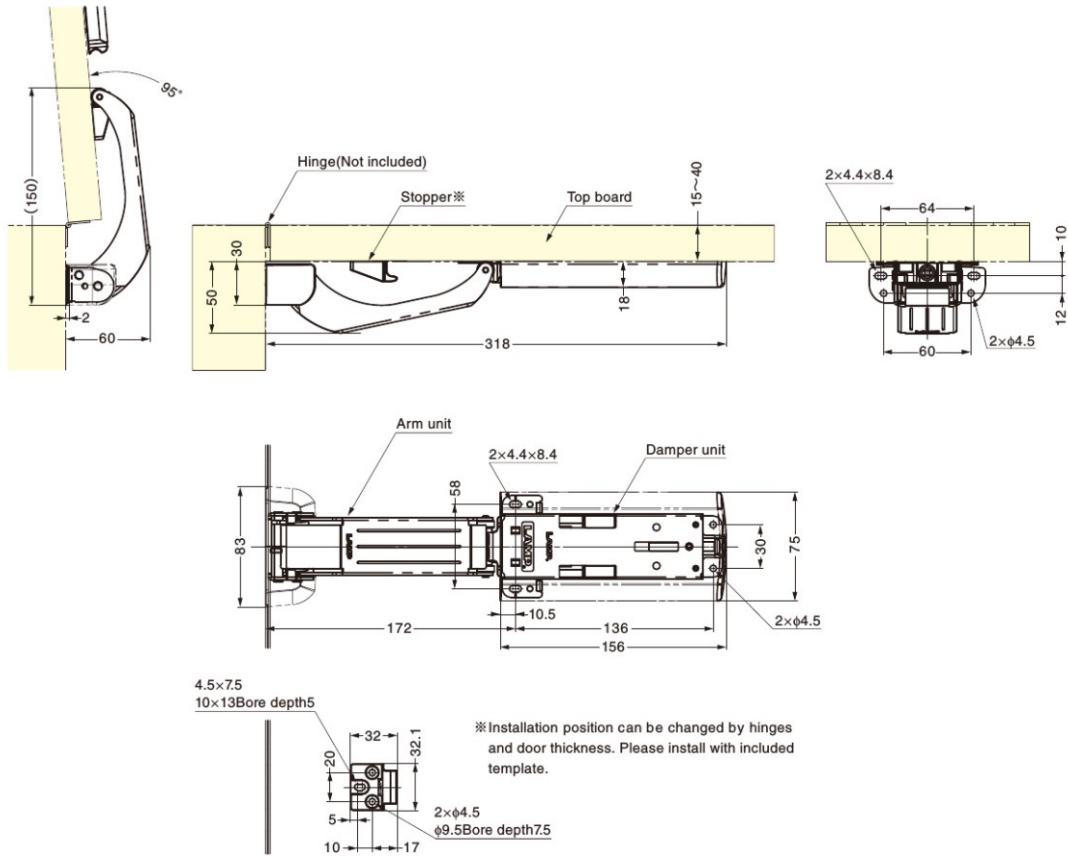


Flap can be held temporarily at 95° .

### ● Easy installation

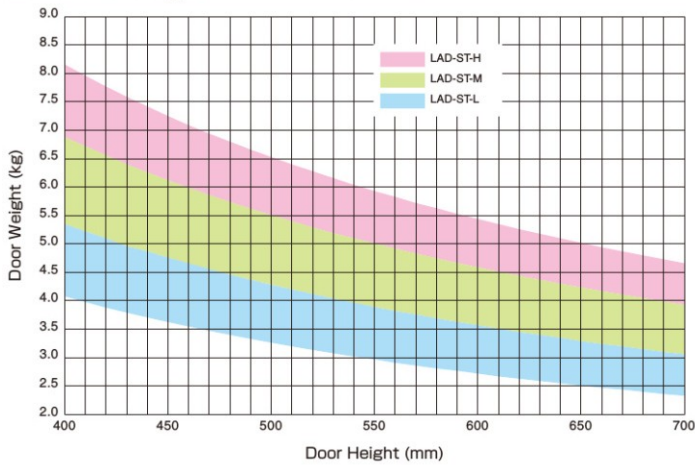


Can be installed without additional processing. Template for easy installation.



### Door Size Ranges

※ 1 pc use only.



Item Code	Item Name	Material	Finish	Max. Moment N · m/piece	Max. Moment kgf · cm/piece	Flap Thickness	Weight	Carton
170-033-213	LAD-ST-L	ABS, Polyacetal (POM), Steel, Zinc Alloy	Zinc Chromate, Nickel Chrome, Nickel	8.0~ 10.5	81.6~ 107.1	15~ 40	750 g	10 pcs
170-033-214	LAD-ST-M			10.5~ 13.5	107.1~ 137.7			
170-033-215	LAD-ST-H			13.5~ 16.0	137.7~ 163.2			