

# SEALED COUNTER PLATE

M



MC-JMP45WT

MC-JMP45BL

### ■ Features

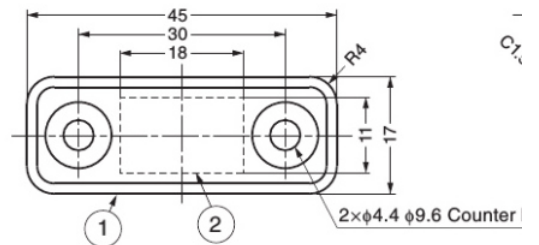
Hermetically sealed, ideal for high corrosion environment and bath equipment.

### ■ Recommended Screw

Tapping screw nominal 4 (truss or binding head, made of screw (made of stainless steel).

### ■ Optional Magnetic Catch Examples:

- Rubber sealed: MC-MS50 (P.271)
- Ultra thin: MC-YN015S (P.261), MC-YN001 (P.261), MC-
- Plastic sealed: MC-JM45 (P.270), MC-JM50 (P.271), MC-



No.	Part Name	Material
①	Body	Polypropylene (PP)
②	Plate	Steel

Item Code	Item Name	Colour	Weight	Box
140-050-122	MC-JMP45WT	White	7.3 g	100 pcs
140-029-241	MC-JMP45BL	Black	7.3 g	100 pcs